



Worksheet

Grade 6- Science

Chapter 6- GETTING TO KNOW PLANTS

Choose the correct Answer:

1. Name the process in which excess water is released from leaves in the form of water vapour.
 - a. Photosynthesis
 - b. Transpiration
 - c. Respiration
 - d. Absorption
2. What is the primary function of leaves in a plant?
 - a. absorbing water
 - b. conducting photosynthesis
 - c. anchoring the plant
 - d. storing food
3. Which of the following root systems is characterised by a single, thick main root with smaller lateral roots?
 - a. fibrous root system
 - b. adventitious root system
 - c. taproot system
 - d. tuberous root system
4. What is the process by which pollen is transferred from the anther to the stigma of a flower called?
 - a. germination
 - b. transpiration

c. pollination

d. photosynthesis

5. What is the primary function of stems in plants?

a. absorbing sunlight

b. transporting water and nutrients

c. anchoring the plant in the soil

d. capturing pollen

6. What is the male reproductive part of a flower that produces pollen called?

a. anther

b. stigma

c. ovule

d. style

7. _____ is a non-flowering plant.

a. rose

b. fern

c. apple

d. mango

8. _____ has a fibrous root system.

a. rice

b. carrot

c. balsam

d. hibiscus

9. stores food in the stem.

a. carrot

b. cabbage

c. ginger

d. turnip

10. The connects the ovary and the stigma.

- a. stamen
- b. style
- c. pedicel
- d. filament

11. After pollination, the _____ develop/s and become seeds.

- a. ovary
- b. pollen grains
- c. ovules
- d. carpel

12. Which is a shrub among the following?

- (a) Spinach
- (b) Mango tree
- (c) Lemon
- (d) Pipal

13. Which of the following type of plants has thick, hard and woody stem?

- (a) Climber
- (b) Herb
- (c) Shrub
- (d) Creepers

14. Which part of plant helps to carry food to all parts of plant?

- (a) Root
- (b) Stem
- (c) Leaf
- (d) Flower

15. Plants take carbon dioxide from the air through tiny openings found on the

- (a) fruits
- (b) leaves
- (c) roots
- (d) stems

16. Which is a correct set of parts of a pistil?

- (a) Ovary, style and filament
- (b) Ovary, style and stigma
- (c) Ovary, anther and filament
- (d) Filament and anther

17. The stalks with swollen tips are called

- (a) pistil
- (b) stamens
- (c) petals
- (d) sepals

Give reason for the following:

18. A leaf is green in colour.

19. Photosynthesis occurs only during the day.

20. Manufacturing glucose is essential for plants.

Give one word or phrase for the following.

21. The main root that grows vertically down into the soil

22. Modification of leaves into thin, delicate, closely-coiled structures

23. The arrangement of veins in a leaf

24. A kind of carbohydrate stored in fruits, roots, stems or leaves

25. Leaf-like structures of a flower which protect the flower when it is a bud.

Fill in the blanks:

26. The ovary of a flower grows and becomes a

27. After fertilization, ovary is transformed into

.....

28. Plants can be classified into _____, _____ and _____.

29. The smaller, side roots are called

30. Leaves are green due to the presence of

31. A bunch of similar roots are called roots.

32. The tiny pores on leaf are called

33. Plants absorb from the air and release
..... in the air.

State whether true or false:

34. Pollination occurs in plants only through air.

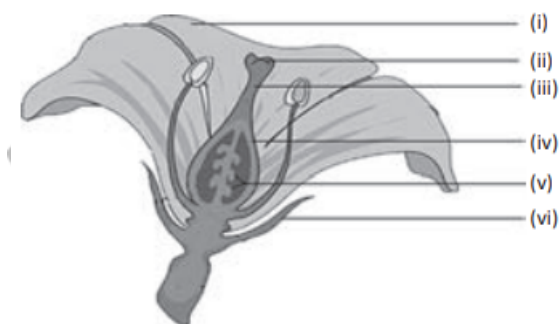
35. Flowers should be pollinated before a plant develops fruits.

36. Successful pollination can take place between a rose flower and a jasmine flower.

37. The pistil is the male part of a flower.

38. Ovary grows and becomes seed after pollination.

39. Label the diagram given.



40. Match the following:

Column I	Column II
1. Absorbs water and nutrients	(a) Tendril
2. Transports food and water	(b) Sepals
3. Attract insects	(c) Ovary
4. Exchange CO ₂ and O ₂ gases	(d) Root
5. Protects the flower bud	(e) Stamen
6. Structure that helps in climbing	(f) Stem
7. Male part of a flower	(g) Ovule
8. Female part of a flower	(h) Flower
9. Fruit develops from	(i) Pistil
10. Seeds develop from	(j) Leaves

